



world  
class  
winches

# Hydraulic Planetary Gear Winches

## H400P

Pneumatic freespool clutch Type No 63.35-010

### 40 TONNES WINCH



	Metric std.	US std. (approx.)
--	-------------	----------------------

**Pulling force**

- bottom rope layer	40.0 tonnes	88 250 Lbs
- top rope layer	27.0 tonnes	60 000 Lbs

**Rope speed in low auto 2-speed**

- bottom rope layer	3.0 m/min	10 ft/min
- top rope layer	4.5 m/min	15 ft/min

**Rope speed in high auto 2-speed**

- bottom rope layer	6.0 m/min	20 ft/min
- top rope layer	9.0 m/min	30 ft/min

**Max oil pressure**

210 bar	3000 psi
---------	----------

**Max oil flow**

70 l/min	18 gal/min
----------	------------

**Drum diameter**

320 mm	12.60 inch
--------	------------

**Rope diameter**

28 mm	1.10 inch
-------	-----------

(Acc. to DIN 14584, MBL ≥ 785 kN)

**Rope length**

80 m	262 ft
------	--------

**Numbers of layers**

4	4
---	---

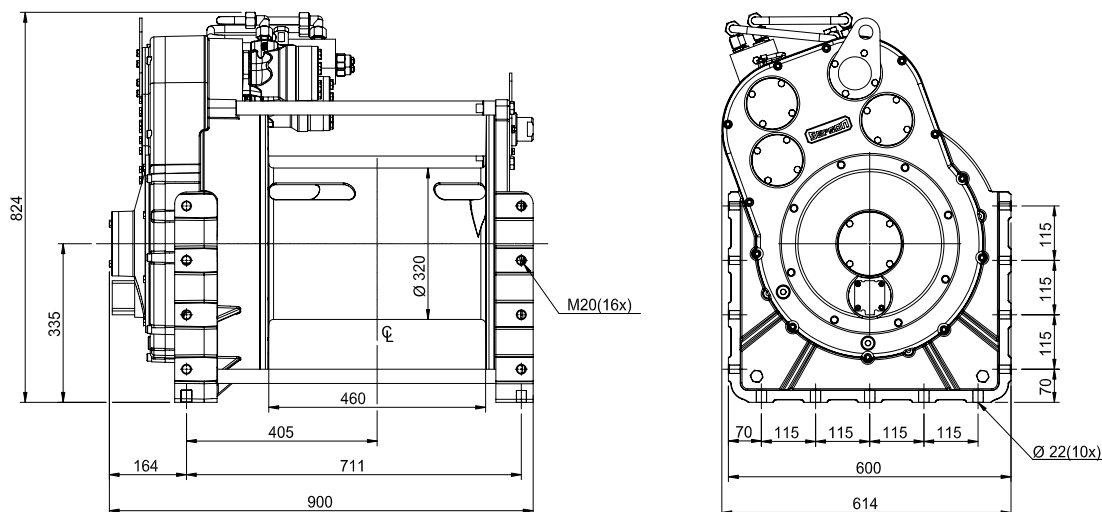
**Winch weight**

580 kg	1279 Lbs
--------	----------

**Rope weight**

307 kg	678 Lbs
--------	---------

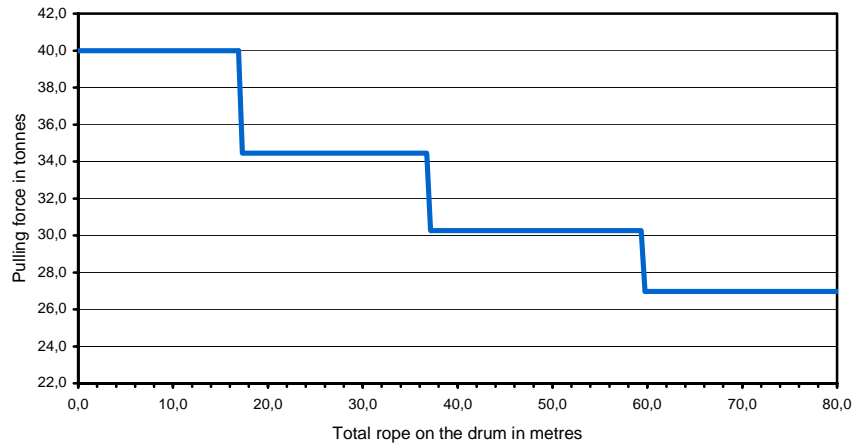
### Dimensional drawing (dimensions in mm)



SEPSON AB  
SE-780 50 Vansbro  
Sweden  
Tel +46 281 758 40  
Fax +46 281 710 09  
info@sepsen.se  
www.sepsen.com

### Pulling force over the rope length

	Pulling force (tonnes)	Rope speed (m/min)	Total Rope on the drum (m)
1st	40,0	3,0	17,1
2nd	34,5	3,5	36,9
3rd	30,3	4,0	59,5
4th	27,0	4,5	84,9

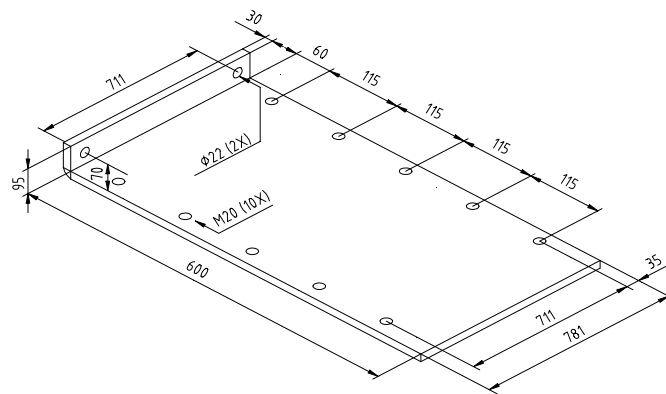


### Mounting instructions

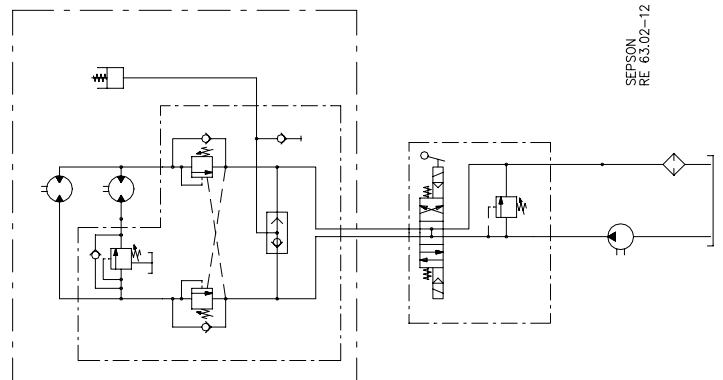
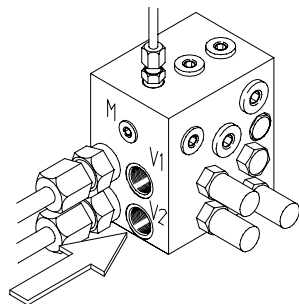
The winch should be mounted on a 30 mm steel mounting plate fixed to the vehicle.

The winch must be fitted to the mounting plate with 10 bolts MC6S M20x60 quality 12.9 and Loc-King nuts.

Tightening torque 420 Nm (42 kpm) when oiled.



### Hydraulic installation



#### Declaration of Conformity

According to the Machine Directive 98/37/EC, Annex IIA

**Sepson AB, P.O. Box 172, SE-780 50 Vansbro, Sweden** declare under our sole responsibility that:

The winch type 63.35 with serial numbers 100-500

- are manufactured according to the Machine Directive 98/37/EC
- are manufactured according to following harmonized standards – EN 292-1 and 2