



world
class
winches

Hydraulic Planetary Gear Winches

H200PX

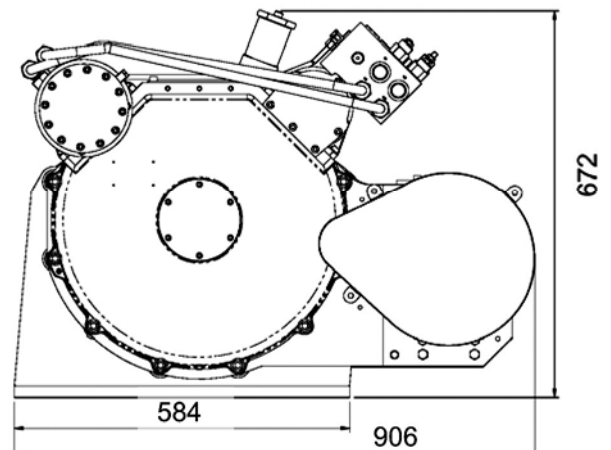
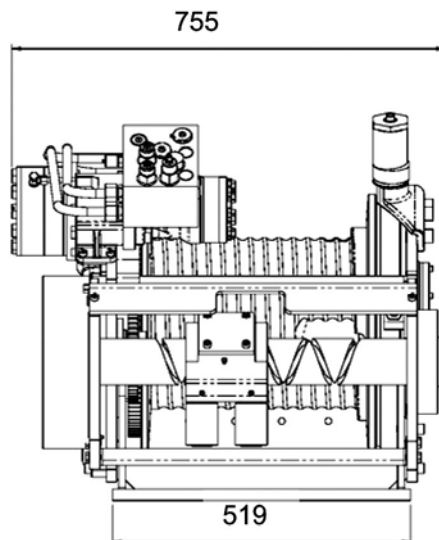
Pneumatic freespool clutch Type No 63.02-038

20 TONNES WINCH WITH ROPE PAY-ON DEVICE



	Metric std.	US std. (approx.)
Pulling force		
- bottom rope layer	20.0 tonnes	44 900 Lbs
- top rope layer	15.0 tonnes	33 700 Lbs
Rope speed in low auto 2-speed		
- bottom rope layer	4.0 m/min	13 ft/min
- top rope layer	5.5 m/min	18 ft/min
Rope speed in high auto 2-speed		
- bottom rope layer	14.0 m/min	46 ft/min
- top rope layer	18.0 m/min	59 ft/min
Max oil pressure	200 bar	2900 psi
Max oil flow	70 l/min	18 gal/min
Drum diameter	290 mm	11.42 inch
Rope diameter	24 mm	0.94 inch
<small>(Acc. to DIN 14584, MBL ≥ 393 kN)</small>		
Rope length	50 m	164 ft
Numbers of layers	3	3
Winch weight	500 kg	1124 Lbs
Rope weight	130 kg	292 Lbs

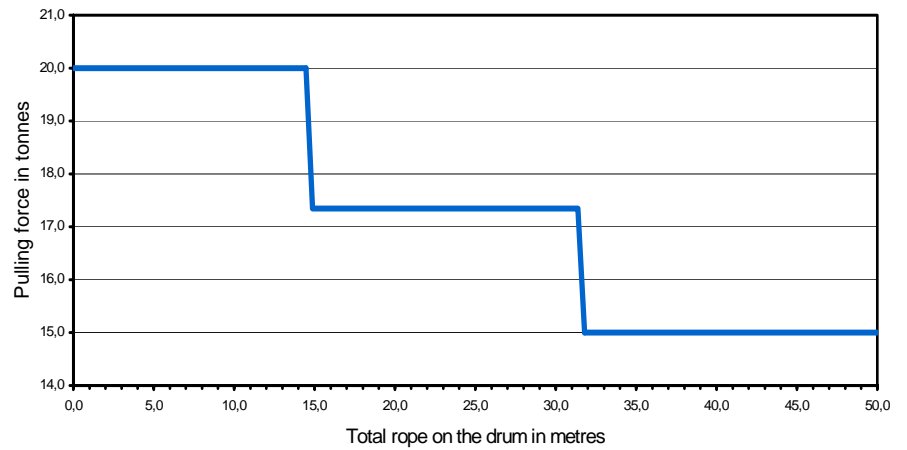
Dimensional drawing (dimensions in mm)



SEPSON AB
SE-780 50 Vansbro
Sweden
Tel +46 281 758 40
Fax +46 281 710 09
info@sepson.se
www.sepson.com

Pulling force over the rope length

	Pulling force (tonnes)	Rope speed (m/min)	Total Rope on the drum (m)
1st	20,0	4,0	14,7
2nd	17,3	4,6	31,6
3rd	15,0	5,5	50,7

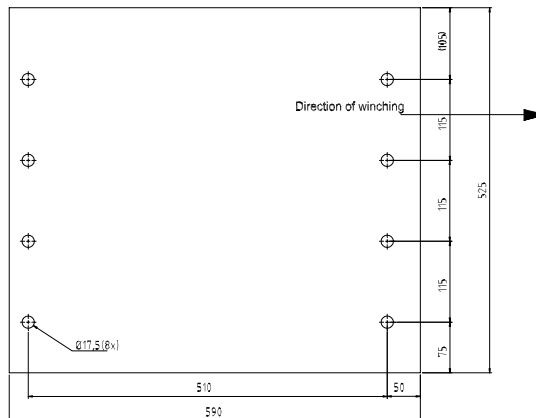


Mounting instructions

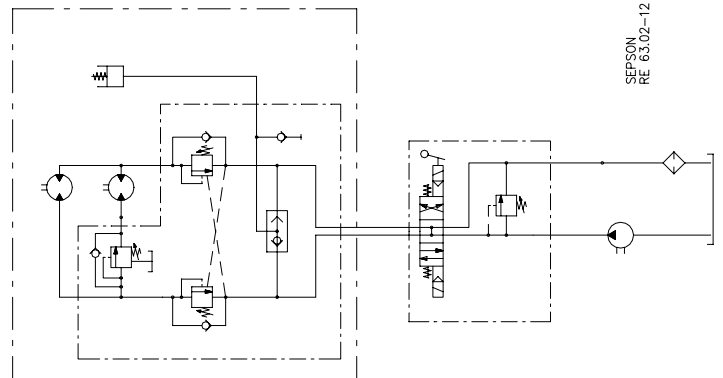
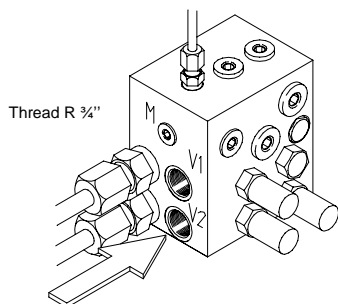
The winch should be mounted on a 20 mm steel mounting plate fixed to the vehicle.

The winch must be fitted to the mounting plate with 8 bolts MC6S M16x55 quality 12.9 and Loc-King nuts.

Tightening torque 360 Nm (36 kpm) when oiled.



Hydraulic installation



Declaration of Conformity

According to the Machine Directive 98/37/EC, Annex IIA

Sepson AB, P.O. Box 172, SE-780 50 Vansbro, Sweden declare under our sole responsibility that:

The winch type 63.02 with serial numbers 242-1236

- are manufactured according to the Machine Directive 98/37/EC
- are manufactured according to following harmonized standards – EN 292-1 and 2